

Nicholas C. Caro, M.D.

Lasik Refractive Instruments



For: “Myopia, Hyperopia and Enhancements”

Caro (LASIK) Flap Smoother

A topical, noninvasive compression procedure, that helps in eliminating what is believed to be microscopic striae or fluid accumulation that lingers once the flap is replaced following laser in situ keratomileusis.

The Caro smoother has a 5mm button, angled 30 degrees from the handle. The button is placed centrally, compressing the cornea, then a squeegee motion outward (toward the flap edges) is used to gently massage irregularities out of the flap immediately after surgery.

The flap smoother is also ideal for dealing with irregular astigmatism problems secondary to laser in situ keratomileusis. The flap smoother provides the surgeon with another option other than lifting the flap and re-treating the patient, up to 6 months post-operatively. 34-7105 Caro (LASIK) Flap Smoother 3mm Button.

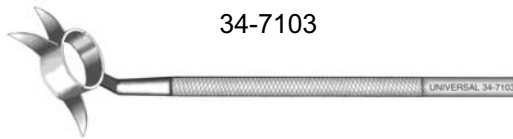
34-7104 / 34-7105



Caro (LASIK) 3 Blade Cornea Marker

The low profile 3 blade marker features one radial and two paraxial markers for a three point alignment of the lamellar flap / cap. The physician can easily realign the LASIK flap to its original preoperative position. If an unplanned cornea cap occurs the physician can quickly replace and realign the cap to avoid the upsided own placement of the cap.

34-7103



Caro (LASIK) Cannulated Stromal Polisher and Flap Manipulator

The flattened 25g #34-8700 (or 27g #34-8750) cannula has a highly polished anterior surface and is designed to effectively lift and manipulate the corneal flap during laser in situ keratomileusis. The posterior surface of the cannula has a roughened surface to loosen and flush away surface debris while gently polishing the stromal bed.

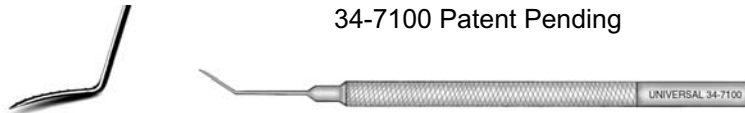
34-8700



Caro (LASIK) Flap Elevator

The broader, semi-sharp tip of the angled elevator is designed to enter beneath the flap and cut a smooth, continuous clean edge through the epithelium and the fibrosis at the flapedge (without tearing) while lifting the flap. “With Calibrated Scale.” (Patent Pending)

34-7100 Patent Pending



All Universal™ / Surgical Eye Care Instruments carry a Lifetime Warranty against Manufacturing Defects.

Precision, Quality, Consistency and Performance

Made in the U.S.A.

B. Graczyk, Inc. - Universal™ / Surgical Eye Care Products

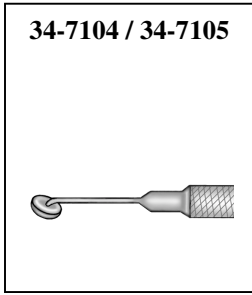
61 Brookside Drive - Glendale Heights, IL 60139

Phone: (630) 871-2440 - Fax: (630) 871-7620

Email: gracykinc@aol.com Web Site: www.keratomeblades.com

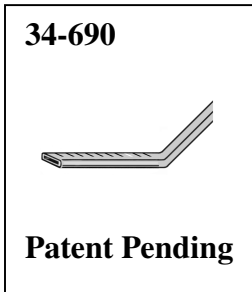


CARO LASIK INSTRUMENTS



34-7104 Caro (LASIK) Flap Smoother, 5mm Button, Angled 30°

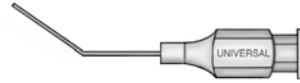
34-7105 Caro (LASIK) Flap Smoother, 3mm Button, Angled 30°



LASIK Irrigating Cannula / Flap Manipulator, Flattened Tip, Angled 11mm with Calibrating Scale.
(Patent Pending)

34-685 25 Gauge

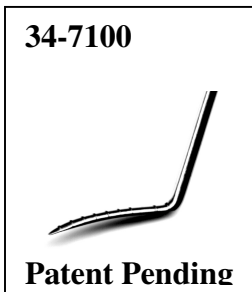
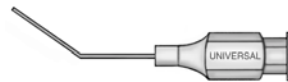
34-690 26 Gauge



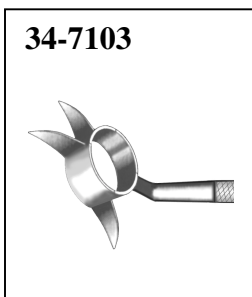
Caro Stromal Polisher, Irrigating / Flap Manipulator, Flattened Tip, Angled 8mm, Roughened Posterior Surface

34-8700 25 Gauge

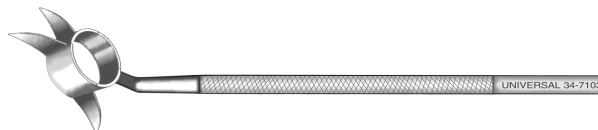
34-8750 27 Gauge



Caro (LASIK) Flap Elevator / Manipulator, Curved Spatula Tip with Calibrating Scale (Patent Pending)



Caro (LASIK) Cornea Marker, 3 Offset Blades, One Radial Two Pararadial for a three point alignment of the lamellar flap / Cap.



LASIK INSTRUMENTS